

Anti-CD2 hlgG1 Antibody (BTI-322)

Product Information

GM-79929AB-10	10 µg
GM-79929AB-100	100 µg
GM-79929AB-1000	1 mg

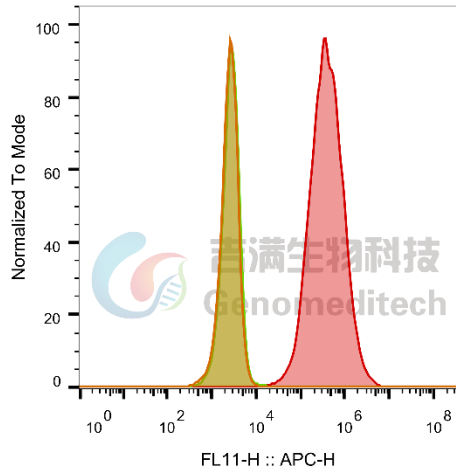
Antibody Information

Species Reactivity	Human
Specificity	Detects human CD2.
Source/Isotype	Monoclonal Human IgG1
Other Names	LFA-2, SRBC, T11
Gene ID	Human: P06729; Cynomolgus: Q6SZ61
Application	Flow cytometry: 1 µg-4 µg /1E6 cells; FC-Quality tested
Background	Human CD2 (also known as LFA-2, for leukocyte function-associated antigen-2) is a monomeric transmembrane glycoprotein of 45–50 kDa and a member of the Ig superfamily. It has two extracellular Ig-like domains (one V-like and one C-like) and a long, proline-rich cytoplasmic tail. CD2 plays an important role in T-cell activation, T- or NK-mediated cytolysis, apoptosis in activated peripheral T cells, and the production of cytokines by T cells. CD2, the E rosette receptor, is an extremely broad T-cell marker. Antibodies to it immunolabel the vast majority of T and natural killer cell malignancies.
Storage	Store at +4°C short term (1-2 weeks). Store at -20°C long term
Formulation	Phosphate-buffered solution, pH 7.2.

Data Examples

Flow cytometry

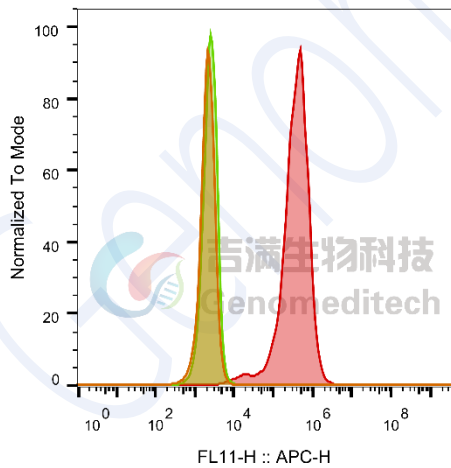
H_CD2 CHO-K1 Cell Line (Catalog # GM-C34200) was stained with Anti-CD2 hlgG1 Antibody (BTI-322) (Catalog # GM-79929AB) or isotype control antibody, followed by anti-Human IgG APC-conjugated Secondary Antibody.



SampleID	Geometric Mean : FL11-H
CHO-K1 anti-H_CD2+APC-2nd Ab	2470
CHO-K1 H_CD2 H_IgG+APC-2nd Ab	2679
CHO-K1 H_CD2 anti-H_CD2+APC-2nd Ab	380691

Flow cytometry

Cynomolgus_CD2 CHO-K1 Cell Line (Catalog # GM-C34201) was stained with Anti-CD2 hlgG1 Antibody (BTI-322) (Catalog # GM-79929AB) or isotype control antibody, followed by anti-Human IgG APC-conjugated Secondary Antibody.



SampleID	Geometric Mean : FL11-H
CHO-K1 anti-CD2+APC-2nd Ab	2103
CHO-K1 Cyno_CD2 H_IgG+APC-2nd Ab	2470
CHO-K1 Cyno_CD2 anti-CD2+APC-2nd Ab	339566